



<https://www.shinwa-jpn.co.jp/>



**CORPORATE PROFILE**

# SHINWA POWER

Shinwa is a development and proposal-based trading company that specializes in metal joining



## SHINWA's 3 CORE POWERS Drive Our Customers Forward

We aim to rely on a company that global customers rely on with SHINWA's 3 CORE POWERS, generated by our Sales and Marketing, Manufacturing, and Management divisions.



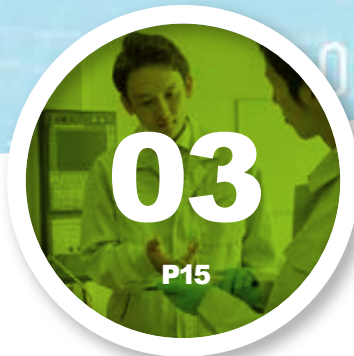
### Power to **CONNECT** Sales and Marketing Division

Connects global customers and suppliers. We provide original products, technologies, services, and logistics



### Power to **CREATE** Manufacturing Division

Creates and makes our customers' needs a reality through maintenance, outsourcing, control units & systems, manufacturing equipment & measuring technology.



### Power to **SUPPORT** Management Division

Supports safety management, accounting & finance, human resource development, and internal control for managing assets and improving corporate value.



# 01

# Power to CONNECT

## Sales and Marketing

We grasp customer needs  
on-site and find solutions.

Sales & Marketing Divisions	Mid-Japan District
	East-Japan District
	West-Japan District
Overseas Business Division	Overseas Business Department

## SHINWA Connects Global Customers with Various Technologies and Products

Due to globalization, new technologies, and changes in value, today's markets demand contemporary and constant innovation. Shinwa's "Three Pioneering Spirits" confronts the expanding markets head-on, and the Power to Connect provides new solutions.



### Domestics Sales

The Domestic Sales departments are connected with over 3,000 customers and more than 4,000 suppliers, providing hardware, software, logistics, and maintenance service.



### Site Operation Management

Our specialists understand production site risks and connect customers with safety management know-how.

### Overseas Sales

The Overseas Sales Department connects with overseas customers and domestic suppliers as an interface for globalization and market expansion.



### Overseas Technical Support

Engineers connect with local suppliers overseas and support customers' globalization through research of local production capacity.





# Information,Action,Creation,Proposals,and Solutions. SHINWA is active in a variety of business fields,with metal joining at its core.

Our engineering power allows us to find the optimal solution to our customers' needs through our trading and manufacturing functions.

We respond to demands from a wide range of industries, such as the electrical machinery, precision equipment, electronics, petrochemicals, papermaking, rubber, resin, steel, communications equipment, and aerospace industries, and especially the automotive industry.



## Joining Materials

Since our establishment, we have continued to supply a variety of products, including special welding materials, brazing materials, and chemical products from domestic and overseas manufacturers.



## Industrial Machinery-Joining Equipment-Factory Automated Systems

We offer a one-stop service for the industrial machinery that make up automotive, air conditioner, etc. production lines.



## In-house Products

Special overlay welding, vacuum brazing, field network systems, jig design and production, coating equipment, and metrology. With years of expertise, we are constantly pursuing technological innovation.



## Domestic Market

# Our Network for the Domestic Market

Shinwa has 10 sales offices and 9 development and manufacturing centers in Japan dedicated to supporting our customers.

19 Domestic Facilities

Sales Office

Development and Manufacturing Center



Company Headquarters



TOGO Logistics Center



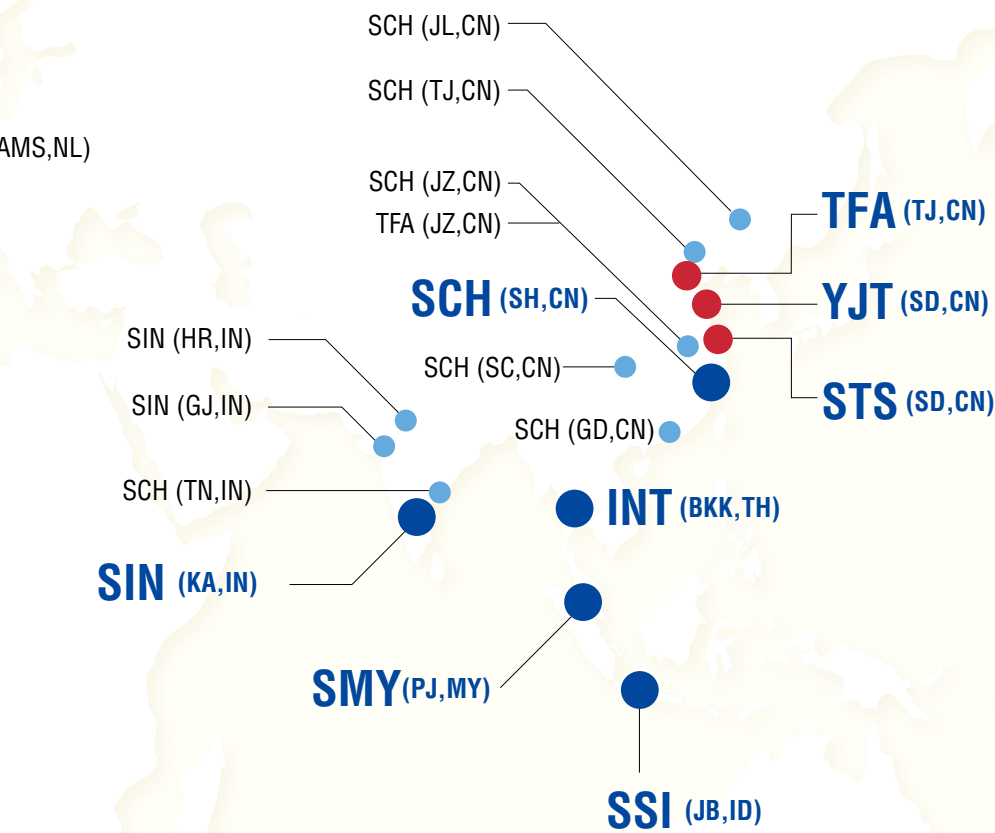
Overseas Business

SHINWA's Global Network

Our overseas business started with the import of special overlaid welding materials from the U.S.A. In 1987, we established our first overseas subsidiary, "SHINWA U.S.A. CORPORATION," in Kentucky, and we now have 12 overseas subsidiaries in 10 countries to support our customers' globalization.

12 Overseas Subsidiaries Connecting the World

- Main Sales Office
- Branch Sales Office
- Manufacturing Facilities



**SWT**  
SHINWATEC LIMITED  
(Burton upon Trent, UK)  
Established in 1998  
European representative office



**SIN**  
SHINWA(INDIA) ENGINEERING & TRADING PRIVATE LIMITED  
(Bangalore, India)  
Established in 2008  
Delhi Branch  
Chennai Branch  
Ahmedabad Branch



**SUS**  
SHINWA U.S.A. CORPORATION  
(Kentucky, U.S.A)  
Established in 1987  
Nashville, TN Branch  
San Antonio, TX Branch



**SMX**  
SHINWA ENGINEERING S.A. de C.V.  
(Querétaro, Mexico)  
Established in 2017  
Aguascalientes branch



**SDB**  
SHINWA REPRESENTAÇÃO COMERCIAL DO BRASIL LTDA.  
(Sorocaba, São Paulo)  
Established in 2010



**SMY**  
SHINWA INTEC MALAYSIA SDN. BHD.  
(Petaling Jaya, Malaysia)  
Established in 2013



**INT**  
SHINWA INTEC Co., Ltd.  
(Bangkok, Thailand)  
Established in 2000



**SHINWA INTEC Co.,Ltd. Chonburi MTC Factory**  
(Chonburi, Thailand)  
Established in 2008



**PT.SANTAKU SHINWA INDONESIA**  
(Bekasi, Indonesia)  
Established in 2012



**SCH**  
SHINWA(SHANGHAI) CO.,LTD.  
(China)  
Established in 2003  
Tianjin Branch  
Suzhou Branch  
Guangzhou Branch  
Changchun Branch  
Chengdu Branch



**STS**  
YANTAI FRONTIER SPIRITS SHINWA MAINTENANCE TECHNOLOGY CO.,LTD.  
(China)  
Established in 2009



**YJT**  
YANTAI SHINWA JOINT TECHNOLOGY CO.,LTD.  
(China)  
Established in 2004



**TFA**  
SHINWA TIANJIN FACTORY AUTOMATION SYSTEM CENTER  
(China)  
Established in 2011  
Suzhou Branch



# 02

## Power to CREATE Manufacturing

Our seven manufacturing teams provide a wide variety of products and services related to equipment / machine / system design, development and production, metrology, parts joining, and maintenance

- 1 Maintenance Technical Center
- 2 Joining Technical Center
- 3 Smart Factory Innovation Center
- 4 Mechatronics System Center
- 5 Mfg. Dept. Aerospace and Aircraft Section
- 6 Mfg. Dept. Metrology and Inspection Engineering Section (Shinwa Metrology Center)
- 7 Mfg. Dept. Engineering Section

## 1 MAINTENANCE TECHNICAL CENTER

Established in 1964

- Repair by special overlay welding
- Screw and barrel production
- Overhaul of kneaders & feeders
- R&D, hydrostatic stress analysis
- Laser cladding

### Global Facilities and Services



MTC Nagoya Factory

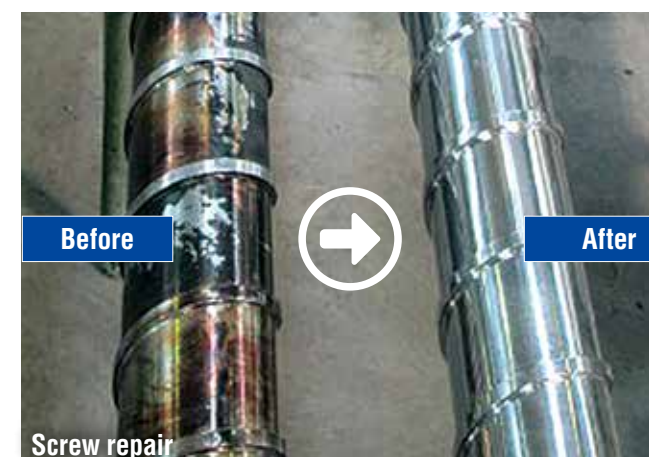


China/Yantai subs.



Thailand/Chonburi subs.

The Maintenance Technical Center has long carried out repairs and restoration of parts, production of screws and barrels, and overhauls of manufacturing equipment and machinery. With our accumulated know-how, we work to develop our core overlay welding and thermal spraying technology and to support our customers by adding value to equipment and providing optimal worldwide procurement.



### Special Overlay Welding and Surface Treatment

It is possible to repair nitrided and hard chrome-plated screws with overlay welding. We select welding materials such as Stellite and Colmonoy according to the type and purpose of the screw or barrel. This method improves resistance to corrosion, wear, and heat, leading to longer equipment life.



### Integrated Overhaul System

Our Nagoya, China, and Thailand factories have an integrated system for overhaul. The system for kneading machines, rotary feeders, and related machines includes disassembly, repair of parts by overlay welding, processing of new parts, restoration, and reassembly. We offer not only maintenance services, but also proposals for performance improvement and long life based on data analysis.



### High-Performance, Quality Products

We satisfy customer needs with new, high-functioning, quality processed products, such as screws and barrels made using the welding and thermal spraying technologies cultivated in our maintenance business. We offer a wide range of materials for corrosion resistance, heat, and wear, including cobalt, nickel, and ceramic, to enable the processing and manufacture of various products.



### Cutting-Edge "Laser Cladding" Technology

We research and develop the new overlay welding technology, "laser cladding," which uses semiconductor lasers. The Nagoya Factory has a laboratory and performs laser cladding tests for performance improvement and long life. We propose optimal maintenance and overhauls to our customers through software analysis of hydrostatic stress.



## 2 JOINING TECHNICAL CENTER

Established in 1959

- Brazing material production
- Development of new technology and unique products
- Contract processing services for brazing and heat treatment
- Support for prototype and mass production

### Global Facilities and Services



JTC Nagoya Factory



China/Yantai subs.

Brazing technology has long been used in a wide variety of industries, ranging from the automotive and electronic appliance industries to the aerospace industry. Especially in recent years, brazing has been utilized in the production of environmentally-friendly products, such as hybrid car and heat exchanger parts. The Joining Technical Center produces brazing materials, develops brazing technology, and supports prototype and mass production. We deliver joy through metal joining.



### Brazing Materials and Chemical Products

We produce a variety of brazing materials and chemical products, such as fluxes, pastes, and tailor-made auxiliary materials. As metal-joining specialists, we develop unique, original-brand products to fit on-site needs.



### Prototype Development

We develop unique joining technology using new brazing materials and equipment for our customers' new product concepts. Making use of our fully-equipped facility and original brazing materials, we offer a variety of solutions to support prototype and mass production.



### Contract Processing Services

We provide contract processing services with optimal joining technology, combining the best balance of the basic elements that determine joint quality.

We also support improvement of productivity and quality by proposing assembly methods and unitization.



### Support of Mass Production

We support mass production in the automotive, electronic appliance, and aerospace industries. We find the optimal brazing form, materials, equipment, and conditions, and through mass production under a thorough management system, we supply customers with high-quality brazing products.

## 3 SMART FACTORY INNOVATION CENTER

Established in 1984

- Production information systems
- DX Promotion
- Industrial equipment devices

### Global Facilities and Services



SFIC Nagoya Factory



SFIC Lab



China/Tianjin subs.

Production information systems and inspection systems for quality control are indispensable manufacturing tools. The SMART FACTORY INNOVATION CENTER develops and creates unique products and systems to fit individual customer needs, developing, designing, and building control systems needed for manufacturing. We can construct networks and provide engineering services for IoT introduction starting from visualization.



### Production Information Systems

We are building a network of production instruction information that travels back and forth across the entire plant, and constructing various system groups such as operation status monitors and production instruction systems that utilize the collected production information.



### Digital Transformation (DX)

We offer proposals utilizing AI, simulations, and the latest devices that make use of the various production information collected. In the future, we will use the collected data to predict signs that may affect the operation of equipment and raise them as alerts, aiming to support the realization of factories that never stop.



### Manufacturing Devices for Industrial Equipment

In the construction of production information systems and the promotion and introduction of DX, We aim to support our customers create new value by combining our global support based on our past experience to meet the specifications of each country, with cost reductions through the manufacture of standardized equipment that takes into account the reduction of waste, unreasonableness, and irregularity.



### SFiC Lab

We have a development lab in Komaki City, Aichi Prefecture, where we support our customers in improving their productivity and quality through hands-on experience with actual equipment, verification with customers, and development.



## 4 MECHATRONICS SYSTEM CENTER

Established in 2006

- Ultra-precise micro-dispensing
- Proposals for tailor-made systems
- Prototype trials and equipment rentals

The key concept of the Mechatronics System Center is ultra-precise micro-dispensing for the electronics industry. The Shinwa Dispenser Series provides unprecedented quality and convenience for board-mounting and semiconductor manufacturing post-processing, and has been met with great acclaim in the mobile terminal and semiconductor industries.



### The New Normal for Dispensing

In addition to manufacturing the Quspa precision dispensing system, the Kasugai office will break new ground in dispensing as a base for prototyping, experimentation, evaluation, and development with customers.

## 5 MFG.DEPT. AEROSPACE AND AIRCRAFT SECTION

Established in 2008

- Welding and assembly of jigs for rockets and aircrafts
- Automated control equipment for general industry

The Aerospace System Section designs, produces, and performs maintenance on jigs used in the aerospace industry for welding processes. We also offer support to simulate optimal shapes and improve designs using fluid and stress analysis software. From the International Space Station to labor-reducing automated production lines, the areas in which we play a role are ever expanding.



### Aerospace-Related Development

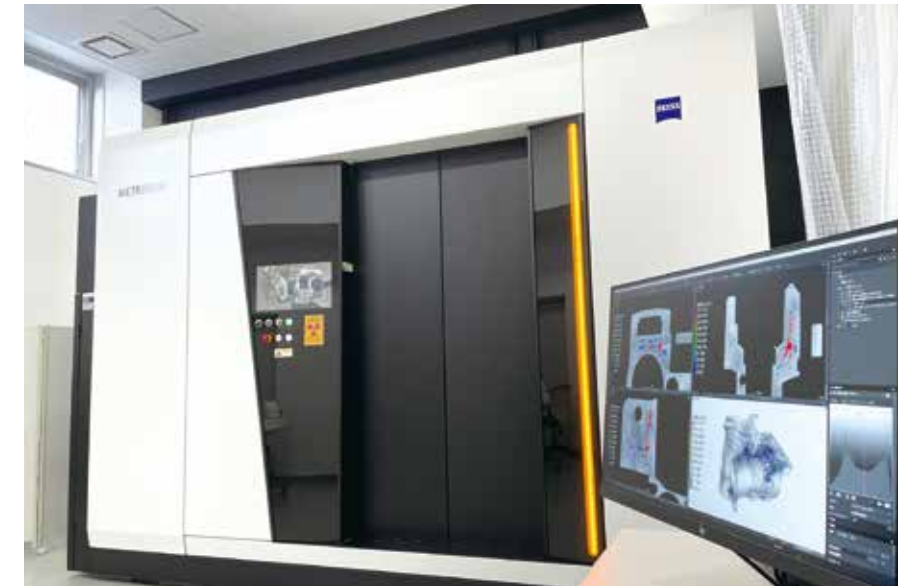
- Rocket fuel tank welding equipment and jigs (HII / HIIA / HIIIB / H3 development)
- HTV loading and unloading equipment
- Welding jigs for space station-related facilities
- Brazing materials for rocket engines, etc.

## 6 MFG.DEPT. METROLOGY AND INSPECTION ENG. SECTION

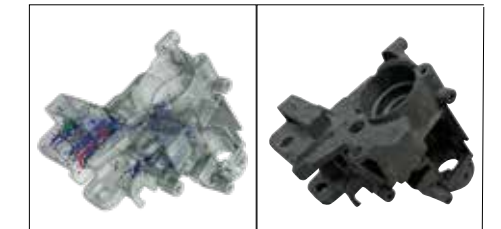
Established in 2016

- Metrology and inspection machines, related equipment, and software
- Metrology services
- Technical support of metrology and inspection systems

In the production of automobiles and industrial equipment, the use of nondestructive three-dimensional measurement is becoming indispensable for quality control and new product development. Shinwa Metrology Center is permanently equipped with measurement and inspection equipment, and offers a wide range of services, including equipment, engineering, software, and contract measurement services, centered on X-ray CT measurement equipment and in-line 100% inspection systems, which are the most advanced measurement technologies.



### SHINWA METROLOGY CENTER



#### Data after internal defect analysis Photograph of actual product

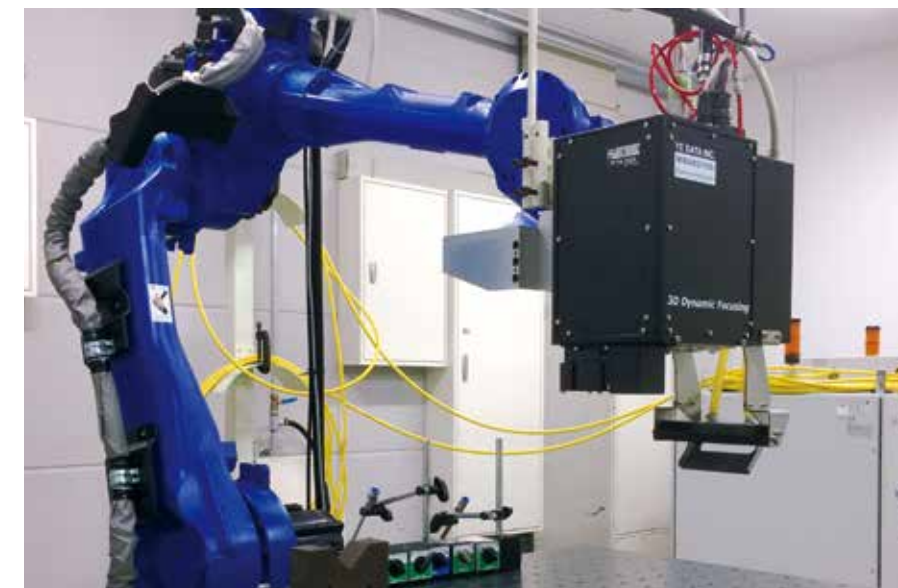
In addition to X-ray CT for non-destructive testing, we have several visual inspection systems and offer machine vision verification services, including test trials.

## 7 MFG.DEPT. ENGINEERING SECTION

Established in 2017

- Underlying technology development for metal joining and surface treatment
- Technical support of SHINWA products, such as heat exchangers

In order to respond to the accelerating needs of the times, such as CASE, we have been developing metal joining technologies such as brazing, cladding, and welding, and have introduced cutting-edge equipment such as laser equipment to meet the needs of the automotive industry, especially for processing nonferrous metals such as copper, which are used in automotive units such as batteries and motors. In order to meet the needs of the automotive industry for non-ferrous metal processing such as copper used in batteries, motors, and other automotive units, we have introduced cutting-edge equipment such as laser equipment.



• Fiber laser device (Multi-mode 6kw oscillator)



• Green Laser (2kW)



• Blue Laser (1.5kW)



# 03

## Power to SUPPORT Management

Corporate compliance, internal controls, support of culture and sports, and CSR activities - We strive to increase corporate value and fulfill various social responsibilities.

Safety and Health Management Department

Internal Auditing Section

Corporate Planning Department

Accounting Department

Purchasing Department

Information System Department

General Affairs Department

## Health and Safety Activities

### Adding Safety to Our Core Perspectives of Quality, Cost, and Delivery

The slogan "Safety First" was coined in the United States in the early 1900s and has since spread to modern industries all over the world. SHINWA aims for "zero accidents" by respecting basic rules and promoting safety awareness at client production sites and company factories. We believe that fostering a culture of safety creates trust and confidence.

#### Safety Slogan

"Increase safety awareness, respect safety rules, and achieve zero accidents."



#### Safety & Health Convention

We operate the SHINWA Safety Council, which has more than 500 partner companies nationwide, and hold safety conventions in local areas three times a year, in spring, summer, and winter.



#### Training for Partner Companies and Overseas Subsidiaries

We hold safety training programs for our partner companies and 12 overseas subsidiaries to promote safety education.



#### Safety Patrol and Inspection by Top Management

Our top management go to job sites and perform safety patrols and inspections, not only of our own manufacturing facilities, but also customer plants.

#### Safe Actions, Zero Accidents

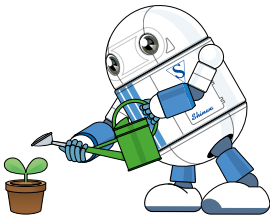
Our president serves as Chief Safety Officer, and the Safety and Health Management Department and the Site Operation Management Department were established to serve as safety specialists.



# Corporate Social Responsibility

## SHINWA Thinks and Takes Action to Be a Corporation that Creates the Future

As a company that supports a variety of industries, we recognize that we are corporate citizens and that CSR is an important management goal. Vigorous corporate compliance and internal control, being eco-friendly, performing health and safety activities, and coexisting with local communities leads to increased corporate value. We believe that small actions we take today will add up and grow to create the future of our world.



### Thorough Corporate Compliance

We at SHINWA have three core principles for expanding business: "Highly transparent and fair business management," "Corporate compliance," and "Environmental and safety activities." The SHINWA Group will continue to maintain corporate compliance and hold high ethical standards, and aims to be a corporation trusted by its stakeholders.



#### Safety and Health Policy

By developing safety-minded human resources, safe work places, a safe environment, and safe organizations, and with all employees having high safety awareness, we are building and maintaining a work environment in which all can work feeling secure.



#### Environmental Policy

We recognize that the protection and conservation of the global environment is an urgent issue on a global scale. We will work to be eco-friendly through our business, products, and services.



#### Quality Policy

We aim to be a global corporation trusted by customers by continuing to improve the effectiveness of our quality management system.

### ISO Certifications



**ISO9001 for Quality Control acquired by SHINWA**  
ISO9001:2015/JIS Q9001:2015  
ID# JQA-QMA14518  
Certified Mar. 1, 2002



**ISO 14001 for Environmental Protection acquired by SHINWA and two domestic group companies**  
ISO14001:2015/JIS Q14001:2015  
ID# JQA-EM6782  
Certified Apr. 6, 2007



**JIS Q 9001 for Aerospace and Defense-related Quality Management acquired by SHINWA**  
JIS Q9100:2016  
ID# JQA-AS0090  
Certified Aug. 27, 2009

# Contribution to Local Communities



#### Traffic Safety through Street Monitoring

Since 1991, SHINWA has participated in traffic monitoring for a local school and collaborated with the local traffic association and police.



#### Disaster Prevention

We support Nagoya City's proposal for safe, disaster-preventing city planning, and, should a major disaster occur, will offer our aid to support victims.



#### Overseas Activities

SHINWA INTEC (Thailand) diligently carries on activities such as supporting the maintenance of the schoolyard of a nearby elementary school and providing relief supplies to the victims of a flood disaster.



#### Donations

SHINWA makes donations to areas that have been affected by disasters such as the Great East Japan Earthquake, the Kumamoto Earthquake, and the West Japan Floods. We also support the Aichi Prefectural Rehabilitation Aid Association.

# Support of Culture and Sports

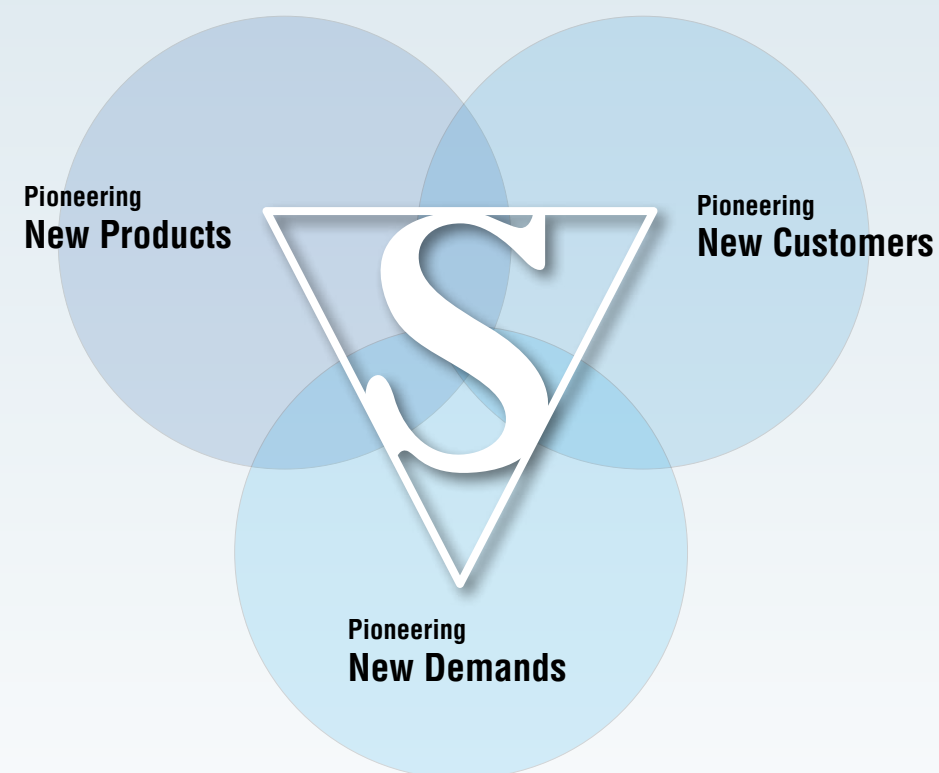


#### Supporting Art by People with Disabilities as an Official Partner

In 2022, Shinwa became an official partner of Paralympic Art®, a program which is operated by the Shougaisha Jiritsu Suishin Kikou Association (Association for Independence of People with Disabilities) as a support activity that contributes to the independence of people with disabilities. Artworks created by artists with disabilities are used in PR materials such as clear file folders.







#### Philosophy

## Three Pioneering Spirits

The predecessor to our corporation, SHINWA SHOKAI Co., Ltd., was established in 1907, and we inherited and enacted their corporate philosophy at SHINWA in 1955. Our Three Pioneering Spirits will continue to guide and lead us forward for the next 100 years and beyond.

#### Message

### Joining the World Joining the Future

#### Mission

SHINWA aims to be corporation that can be counted upon by global customers to bring together people, things, and society, and to create added value for the future by grasping industrial needs and providing expert solutions.

#### Guiding Principles of Our Operations

1. To take on bold challenges in order to pursue the trust and satisfaction of our business partners, with the "actual place, sources, and facts" philosophy and frontier spirit as our motto.
2. To act responsibly and earnestly in compliance with international rules, local laws, social norms, and internal rules.
3. To share a mentality of "Safety First" among all employees.
4. To create a work environment for employees that respects individuals, in which they can work with pride, and to work to help them realize safe, stable lives.
5. To properly manage and fairly disclose corporate information to stakeholders and society.
6. To work to build an eco-friendly society and to preserve the natural environment.
7. To promote CSR activities and to coexist in harmony with our local communities.

#### Message from the President

## Our Mission

As the incumbent President and Co-CEO, I would like to express my sincerest gratitude to Shinwa's esteemed stakeholders, including but not limited to our employees, business partners, investors, and customers for their continuing support which has allowed our company to thrive for the past 73 years since its establishment.

In addition to technology, our business and regulatory environment is changing at an unprecedented speed.

Under such circumstances, our most recent Medium-term Management Plan, the 4th since its inception, lays out specific strategies to achieve a sustainable business growth while leveraging on some of Shinwa's core strengths. I have summed up 5 of our indispensable strengths which should enable us to achieve a historically all-time high sales, profit, and return to our shareholders by the end of our Fiscal Year ending in August 2026.

1. Material Joining Technology combined with an all-inclusive application study , testing, and validation infrastructure.
2. A large and experienced team with solid knowledge of the Industrial Production Environment. Experience and Skill Sets accumulated over years of managing and working in projects in manufacturing industries around the world.
3. Flexibility and Speed in adopting new technology while capitalizing on our Engineering, Manufacturing, and Trading functions
4. Solid Finance and Free Cash Flow Resources enabling us to aggressively invest in Human Resources and New Business Development
5. An extensive and rapidly growing international business network

Our aim is to grow our business while wholeheartedly embracing sustainability issues, including but not limited to practices related to human resources diversity, climate change, and social & community development as means to enhance our company's value and competitiveness.

**Yoshiro Takitani**

President / CEO





## SHINWA's Beginnings

# Origin

## Becoming a 100-year Company

### 1951 → 1991

Shinwa Shokai Co., Ltd. was established in Osaka in 1951. After signing a contract to be the mid-Japan distributor of American-made "Eutectic Low-Temperature Welding Rods," the company moved its base to Imaike, Nagoya. Work started from headquarters set up in a 24-square-meter remodeled house in Uchiyama-cho. Eventually, this office was relocated to Ikeshita in 1962, and business expanded with the growth of the automotive industry, brought about by the progress of motorization.

**The company name was changed to SHINWA Co., Ltd. in April 1973.**

In 1959, Chuo Chemical Industry Co., Ltd. was established to provide brazing and heat treatment services using a vacuum furnace, new processing technology at the time. Then, operation began at the Headquarters Factory (present-day Headquarters Building) in 1964 for new technology such as metal spraying and plasma welding to meet the needs of special overlay welding and spray processing.

**This was the start of "SHINWA, the Metal-Joining Technology Experts"**



Uchiyama-cho Headquarters, approx. 1954



Shinwa Headquarters in Ikeshita, from 1962 to 1991

Chuo Chemical Industry Co., Ltd.  
(Present-day JTC),  
from 1959 to 1988



Headquarters Factory  
(Present-day Headquarters  
Building),  
from 1964 to 1989

### 1991 → The 21st Century

The corporate message "Joining the World, Joining the Future" expresses the spirit of SHINWA's predecessors. Overseas business began with the import of low-temperature welding rods, and has now expanded to 12 subsidiaries in nine countries, with more than 300 local group employees.

As a trading company with a manufacturing division, we will retain our passion for manufacturing and pass that passion on to the world and the future.

**Look forward to more great things from SHINWA.**



Headquarters were  
relocated to  
Moriyama Ward  
in 1991

Listed on the  
Tokyo Stock Exchange  
1st Sec.  
in 2005



Operations at the  
TOGO Logistics Center  
began in 2019

 *Shinwa Co., Ltd.*

**Joining the World Joining the Future**

#### Trademark and Emblem

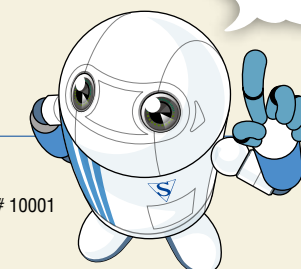
進 和

Our company's trademark has been used since the days of SHINWA's predecessor, SHINWA SHOKAI, which was established in Dalian, China in 1905. Our predecessors believed that the strong, upper-right-moving strokes of this trademark portrayed company growth.



The emblem designed with a letter "S" in an inverted isosceles triangle expresses the dynamism of our company. The shape is said to be a "V" for "Victory," as well as impart the image of a top spinning at high speed, which both creates stability and causes whirlwinds, thus depicting the company's energy.

Please feel free to  
contact us at any time.



Employee ID# 10001  
ALFA ROBO